



iPhone 6 Teardown

Preliminary cursory teardown of Apples latest iPhone 6.

Written By: Patrick Lee



INTRODUCTION

Our friends at [iExperts](#) in Sydney pulled apart an iPhone 6 while we were working on our [iPhone 6 Plus](#) teardown.

Update: iFixit has conducted a [full-blown in-house analysis with more photos and detail](#).



TOOLS:

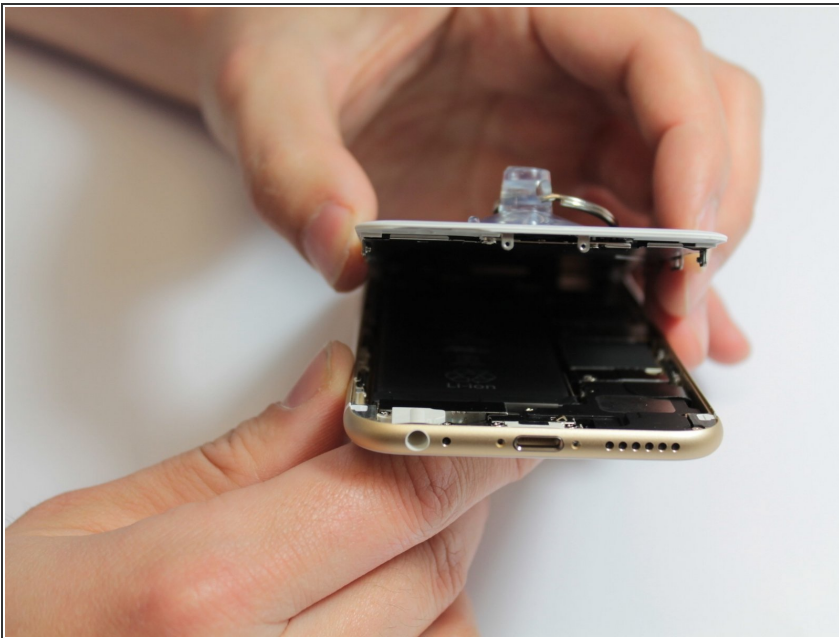
- [Phillips #000 Screwdriver](#) (1)
 - [P2 Pentalobe Screwdriver iPhone](#) (1)
 - [iFixit Opening Tools](#) (1)
 - [Spudger](#) (1)
 - [Tweezers](#) (1)
 - [Heavy-Duty Suction Cups \(Pair\)](#) (1)
-

Step 1 — iPhone 6 Teardown



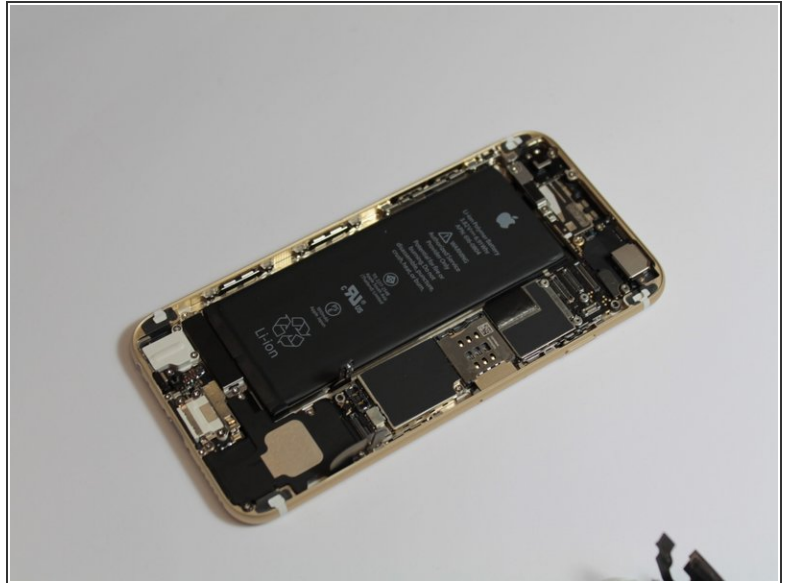
- Unboxing the iPhone 6: yup, it's a phone.

Step 2



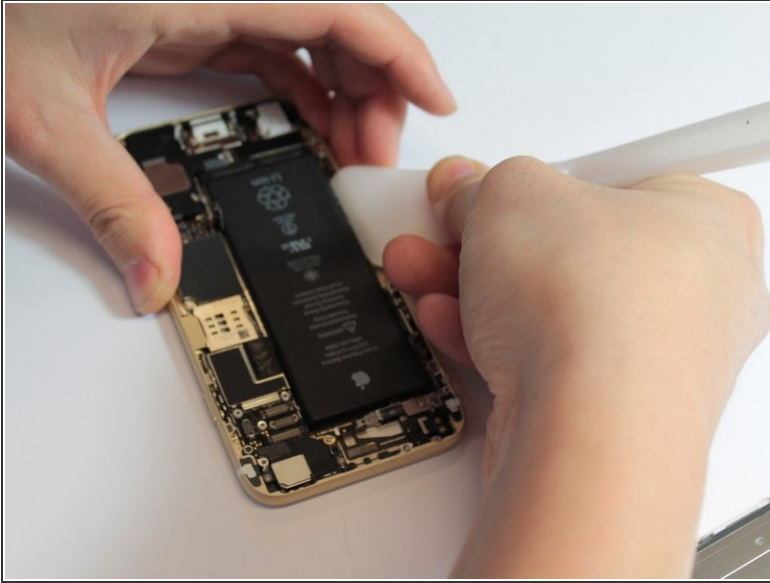
- After removing the familiar two Pentalobe screws we use a suction cup to carefully lift up the screen to give us enough space to run a plastic tool down the edges to release the screen clips
- Unlike the 5s, The 6 Touch ID cable is now routed up the back of the screen, so we don't have to worry about accidentally ripping the touch ID cable.

Step 3



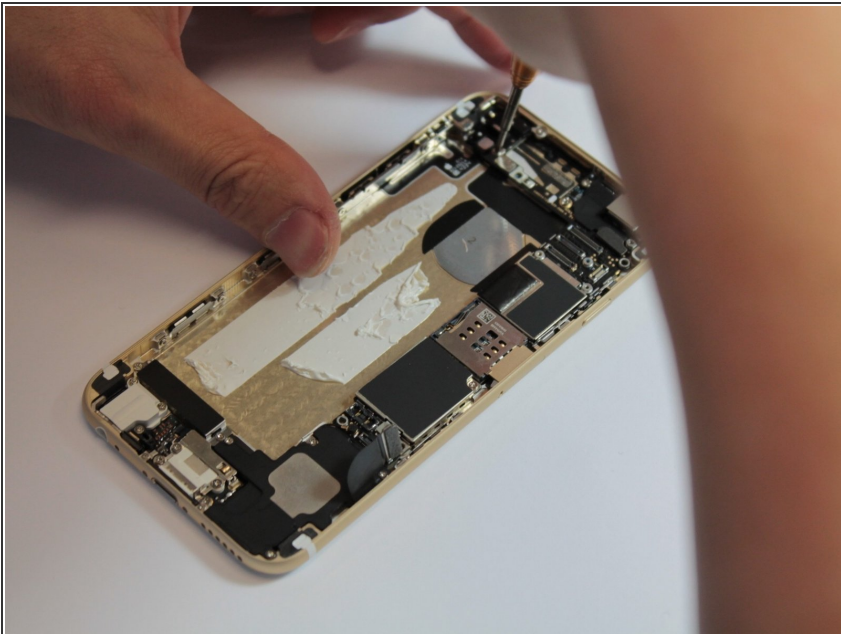
- The screen connectors are covered by a metal plate, similar to the previous models.
- This plate is held by 5 screws this time.
- There are 5 connectors under this plate: LCD/Touch Sensor/Front Camera, Rear Camera and TouchID.

Step 4



- The battery is very well stuck in. With a bit of heat and a little deformation of the battery, we were able to get it out. (There's probably a pull tab to remove the battery, but we didn't find it.)
- The battery is rated at 3.82V, 6.91Whr.

Step 5



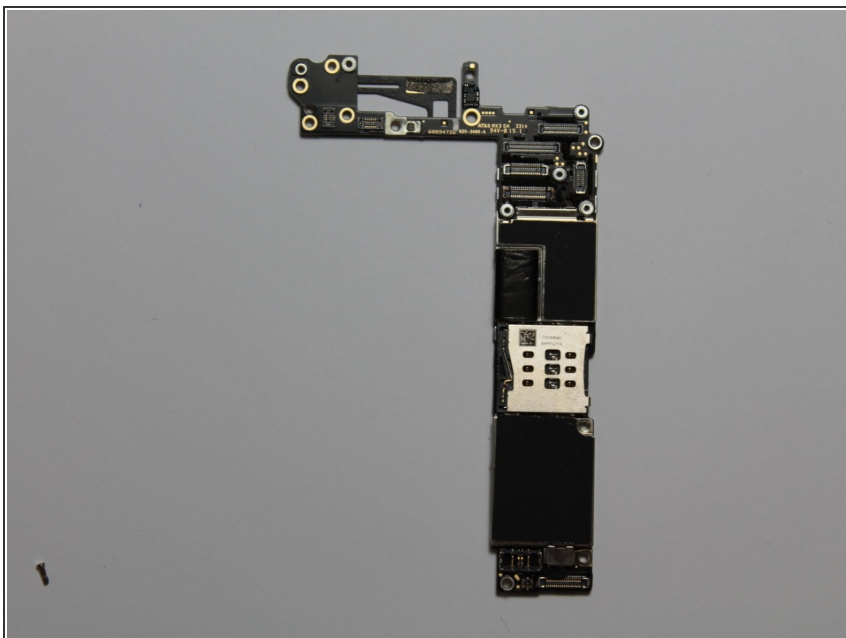
- Removing the logic board requires the removal of many screws.
- Fortunately for DIYers, Apple have placed the chips away from most of the screws so there is less risk of tool slip damage.

Step 6



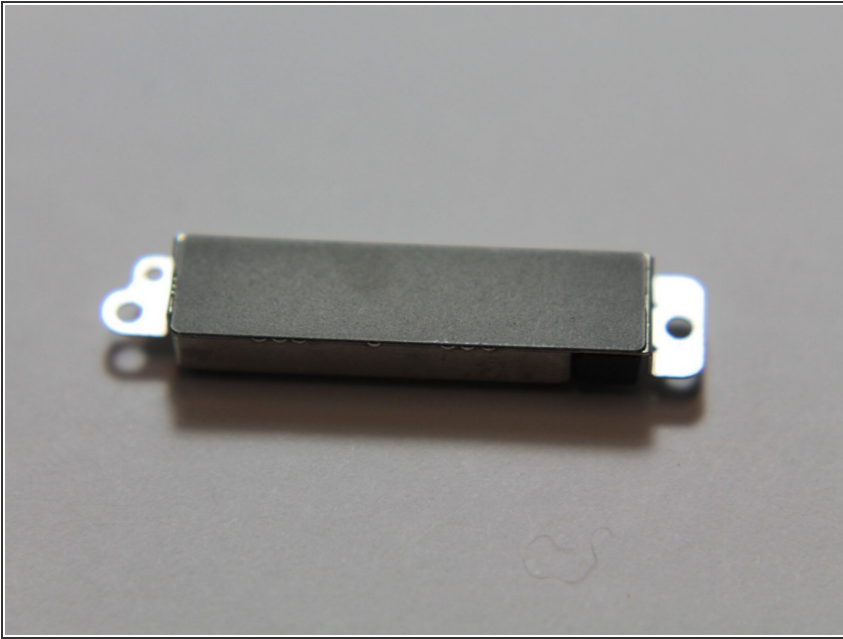
- The iPhone 6 rear camera: not as big as its optically stabilized brother.

Step 7



- The iPhone 6 logic board.

Step 8



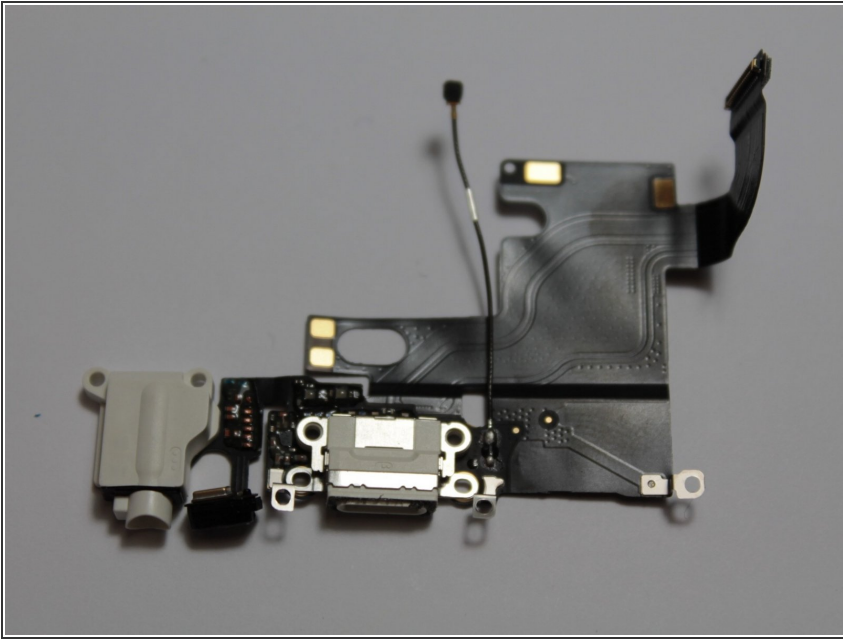
- The vibration motor is now inside a metal case!

Step 9



- The loudspeaker.

Step 10



- The Lightning port.

Step 11



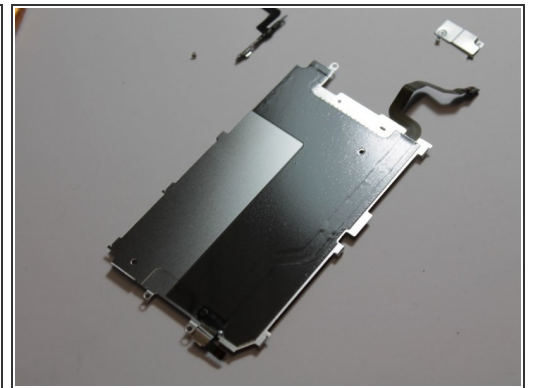
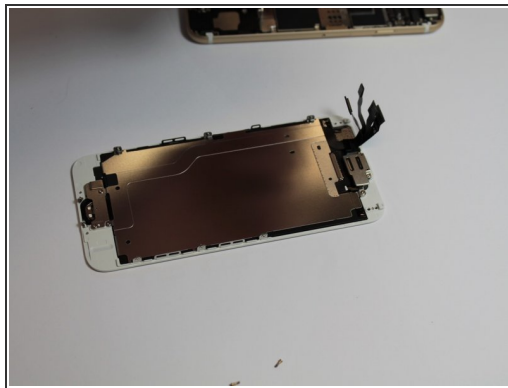
- The Touch ID sensor.

Step 12



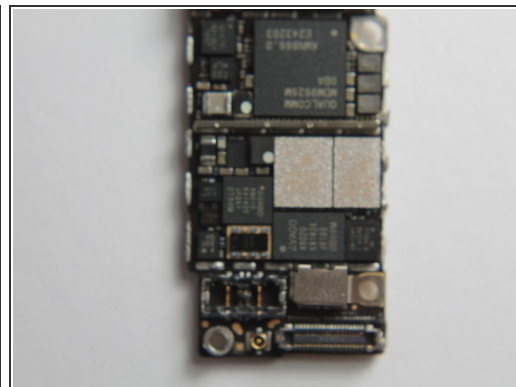
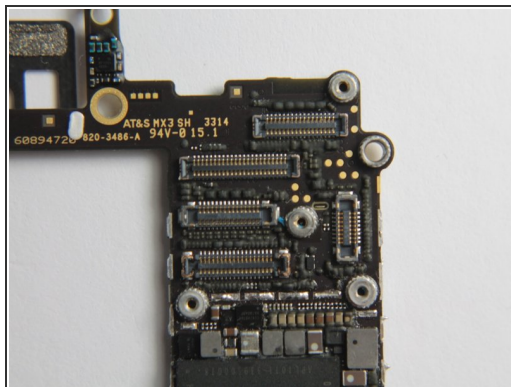
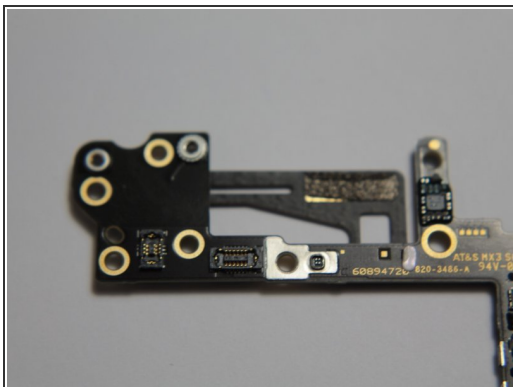
- The front camera and proximity sensor flex cable.

Step 13



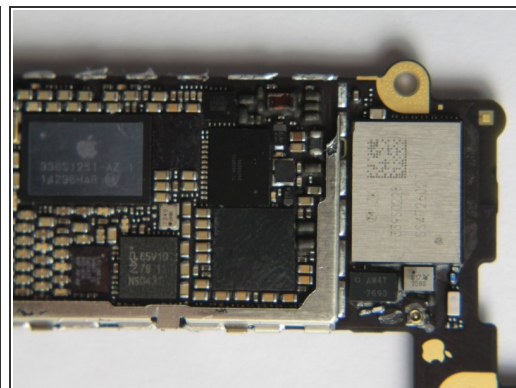
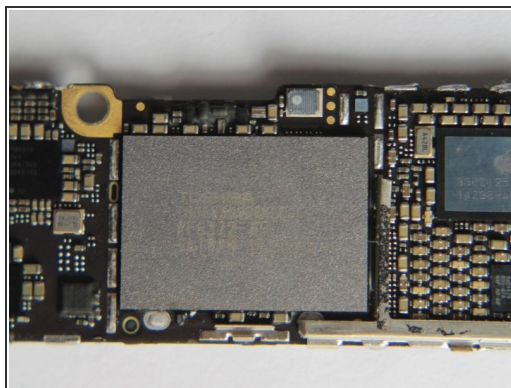
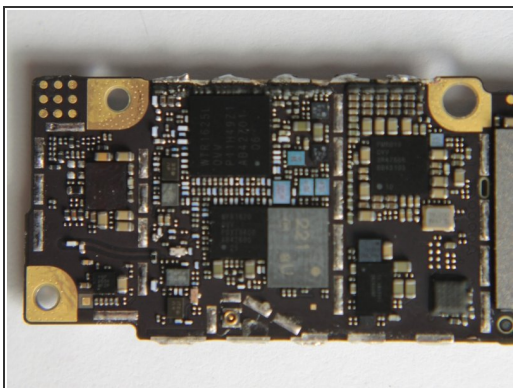
- The iPhone 6 display assembly. It's thinner than the iPhone 5s/5c/5 screen.
- The Touch ID Cable runs from the home switch to the top of the screen, adding a 4th connector at the top.

Step 14



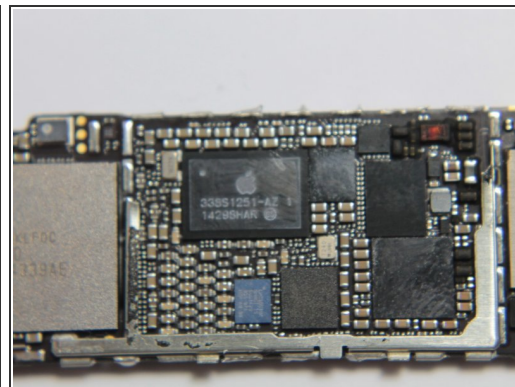
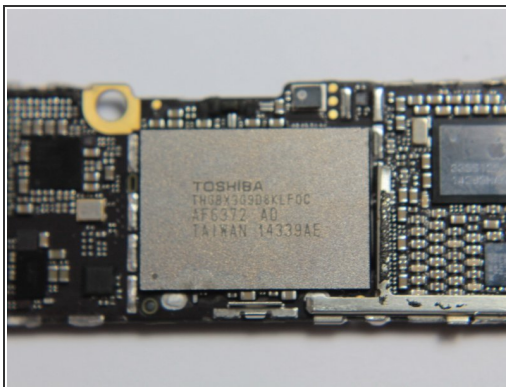
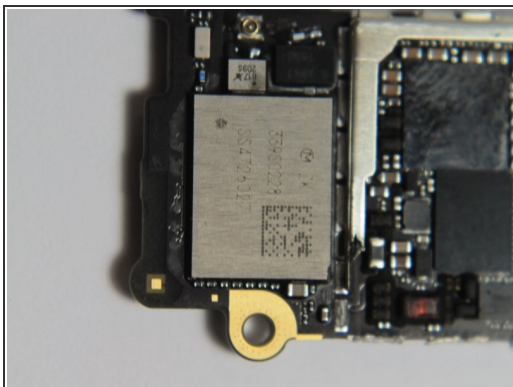
- After the usual painful desoldering of the shielding, we have the logic board in all its naked glory.
- Analysis to follow with iFixit's full teardown.

Step 15



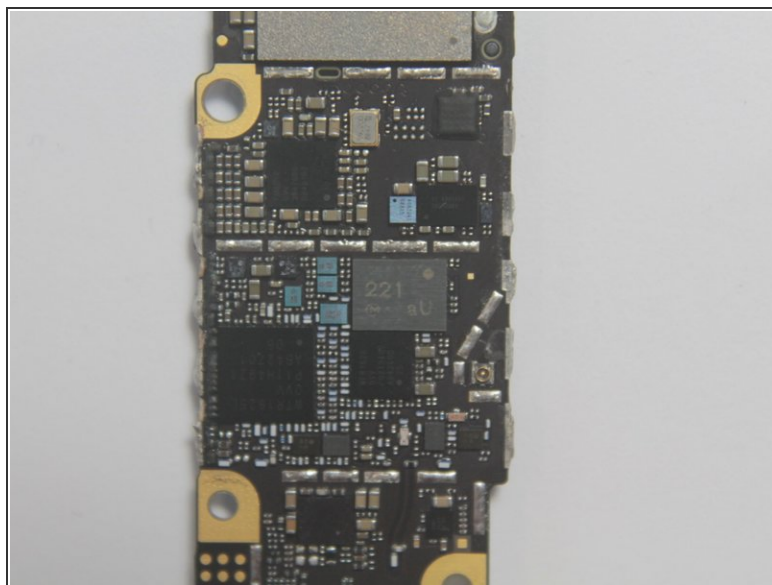
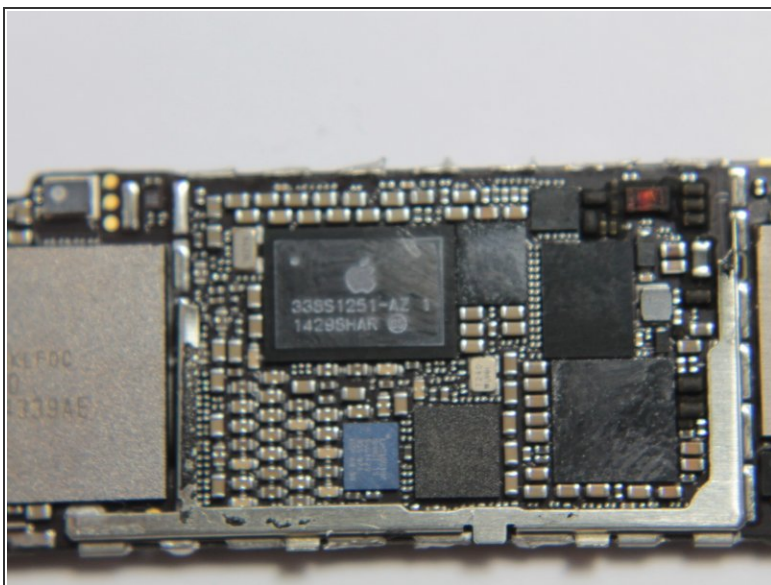
- More chip pics!

Step 16



- Even more ICs.

Step 17



- And that's all she wrote! We'll be back soon with a complete teardown and analysis from iFixit with higher resolution photos.